

# KBR : a new page

**RE-USE AND DURABILITY IN RENOVATION**  
SEMINAR LIBER LAG-25 APRIL 2024

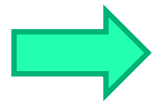
Mont des Arts B-1000 Bruxelles  
+32 (0) 519 53 11  
[www.kbr.be](http://www.kbr.be)

**JCAU**

JO COENEN ARCHITECTS & URBANISTS  
van stadsontwerp tot architectonisch detail

# Present Goal

**Be more than just a library**



**Opening up the building: adaptations needed**

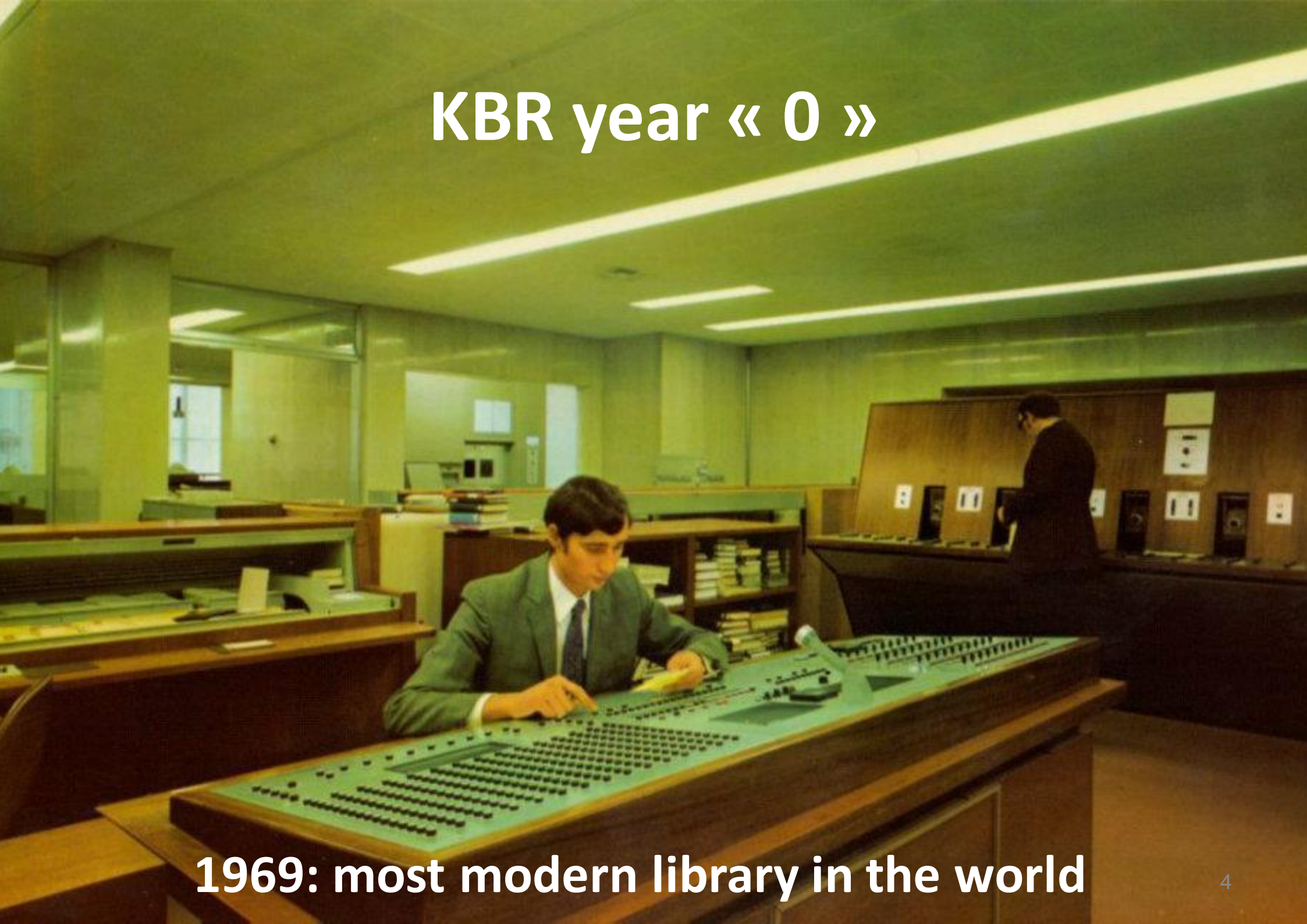
- KBR Museum and expo's
- Venue hire
- Restaurant
- Renovation reception area
- Elevator
- Patio

# Present Goal

Focus on researchers and students

**“Reading Room of the Future”**

# KBR year « 0 »



1969: most modern library in the world







# **KBR year « 0 »**

- **Designed to be a modern national library, with status and prestige**
- **High-quality furnishing**
- **Modern technology and functionality**
- **Comprehensive project: exterior and interior**

# KBR Now

Visitors and collections as a central point





# Circularity and durability as focus point for our development





# KBR Now

Treasured is durable

To build value is to cherish

To hold on to good things is sustainable

**KBR**  **Where time  
is treasured**







**STUDY for a new sustainable reading room**

**PARTICIPATORY sessions – PERSONAS**  
**(social sustainability)**

**MASTERPLAN - from the city to the chair**  
**(technical sustainability/circularity)**

**ANTICIPATE the change – KBR 3.0**  
**(thinking beyond the assignment)**

# Personas

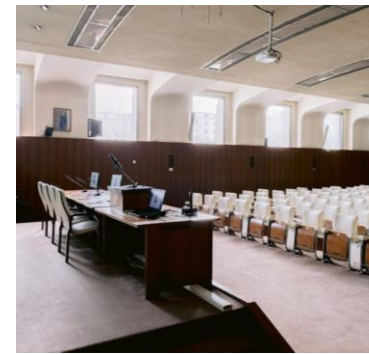
- **Claire:** researcher with research experience
- **Sébastien:** amateur researcher
- **Rachel:** student, learning to conduct research for the first time



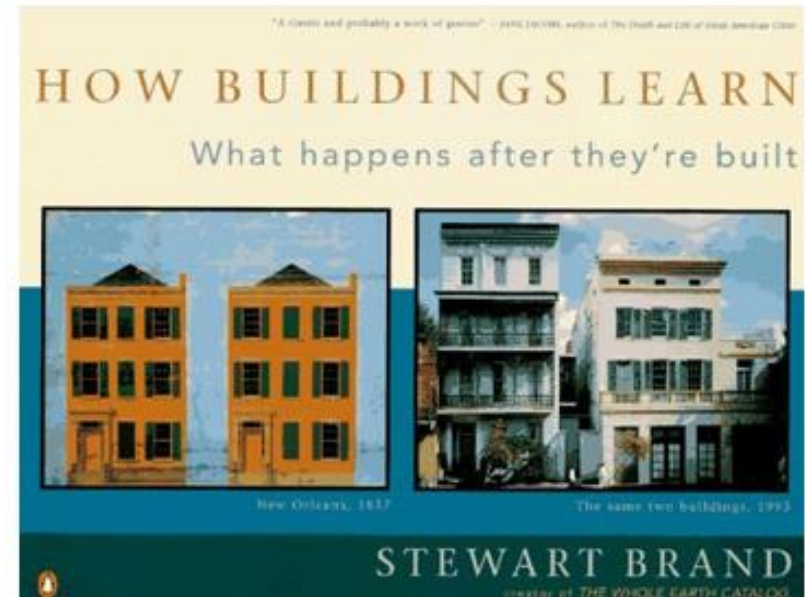
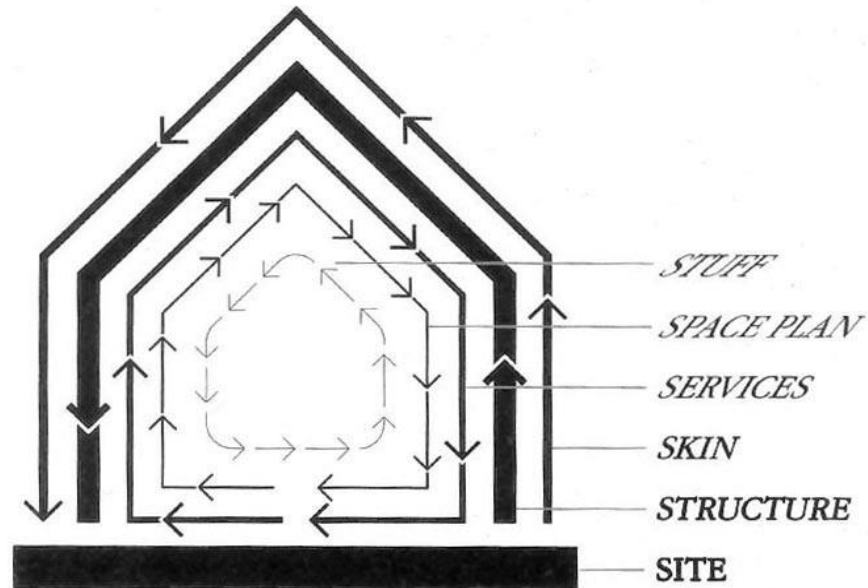
- **Fred:** *Digital only*



- *Culture lovers*
- *Business people*



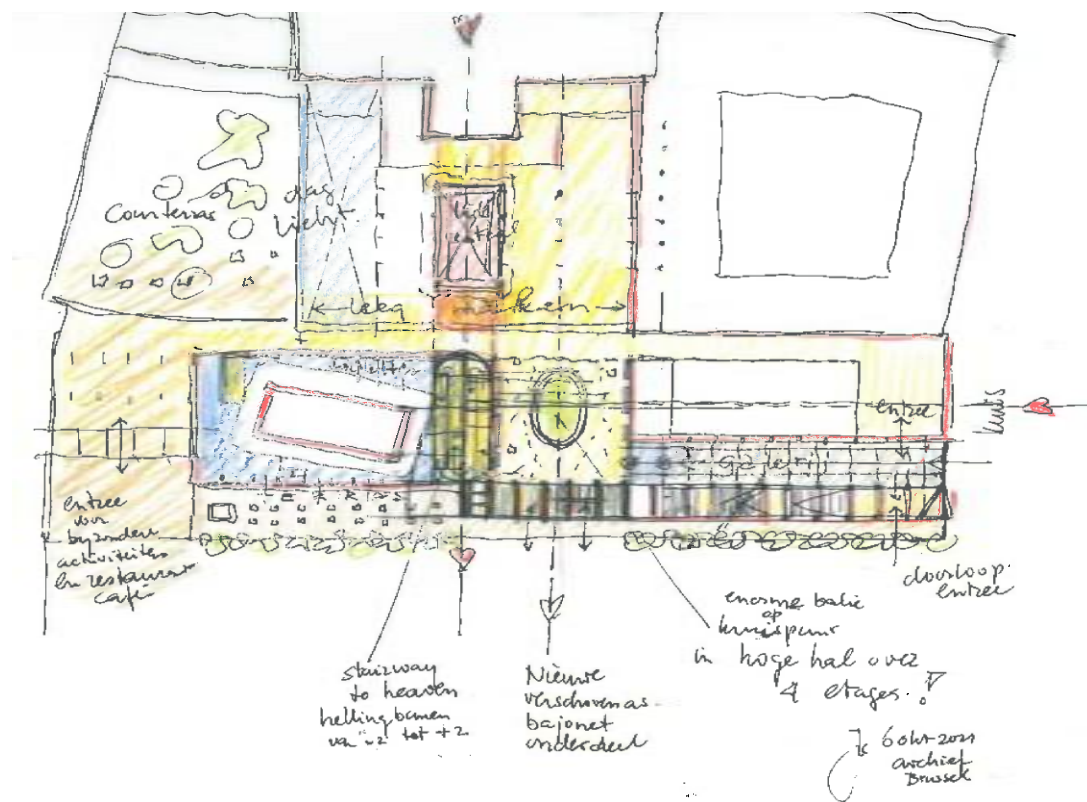
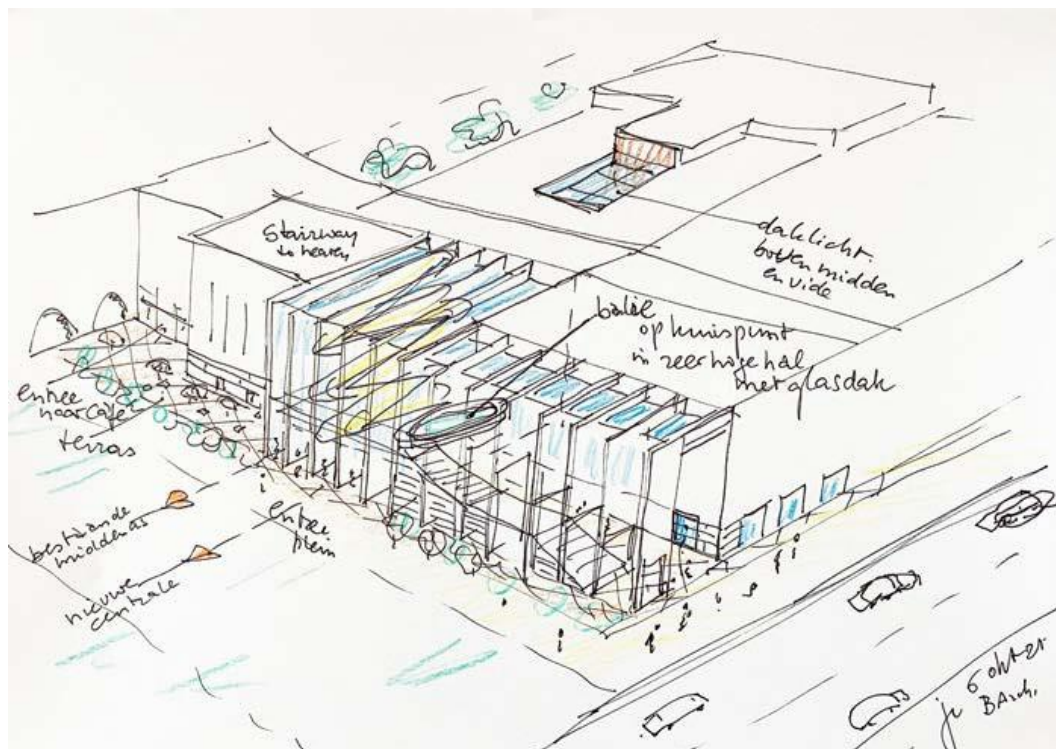
# Stewart Brand



How buildings learn – what happens after they're built

[Shearing layers](#)







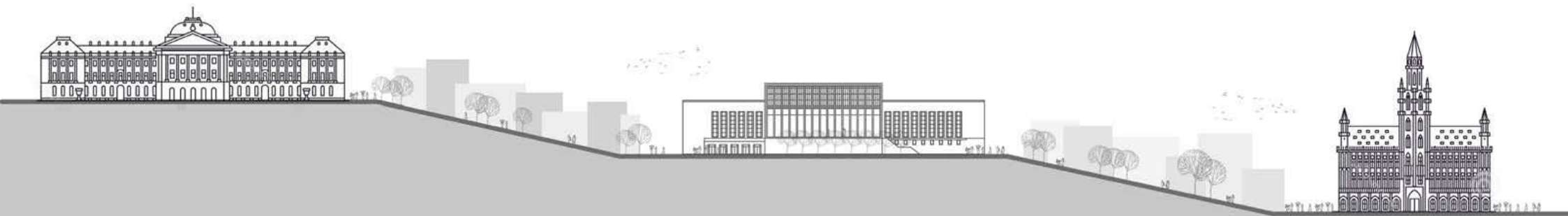
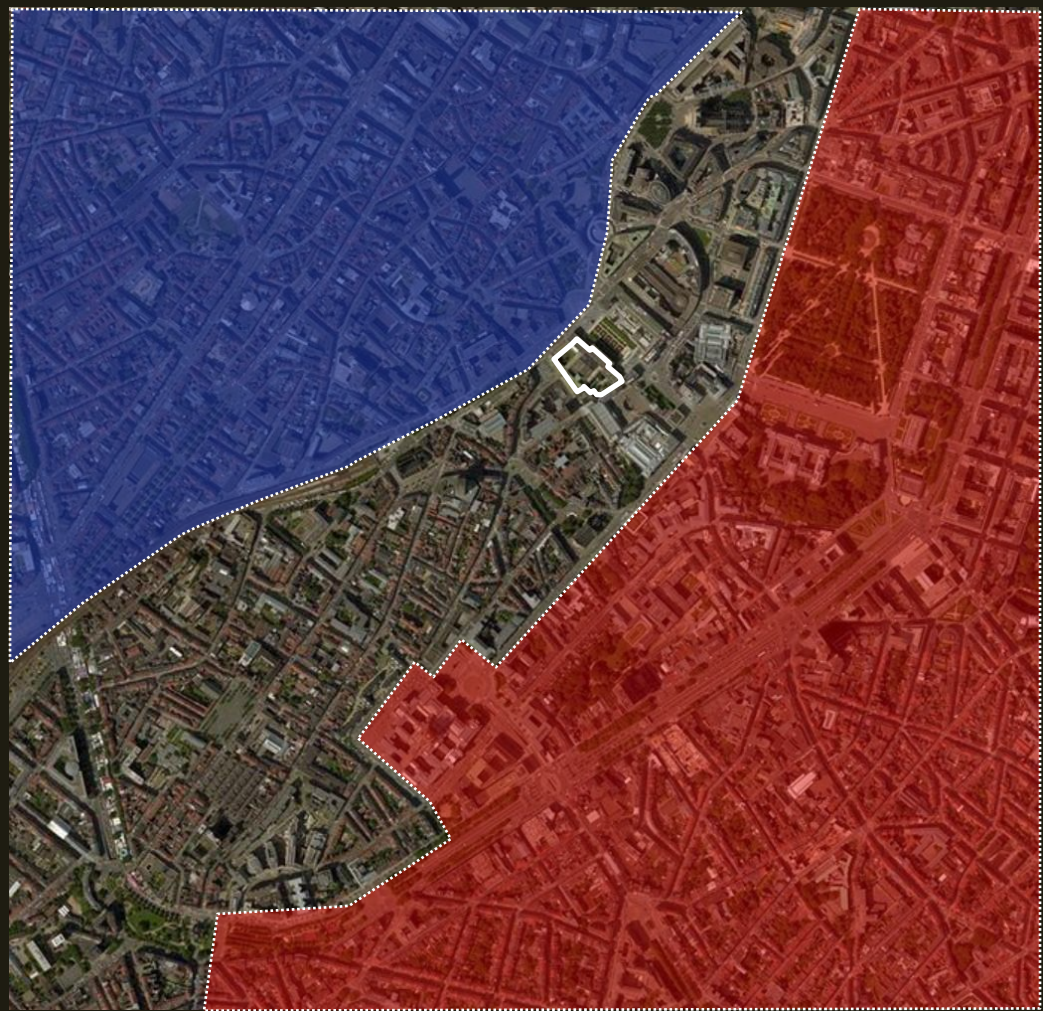


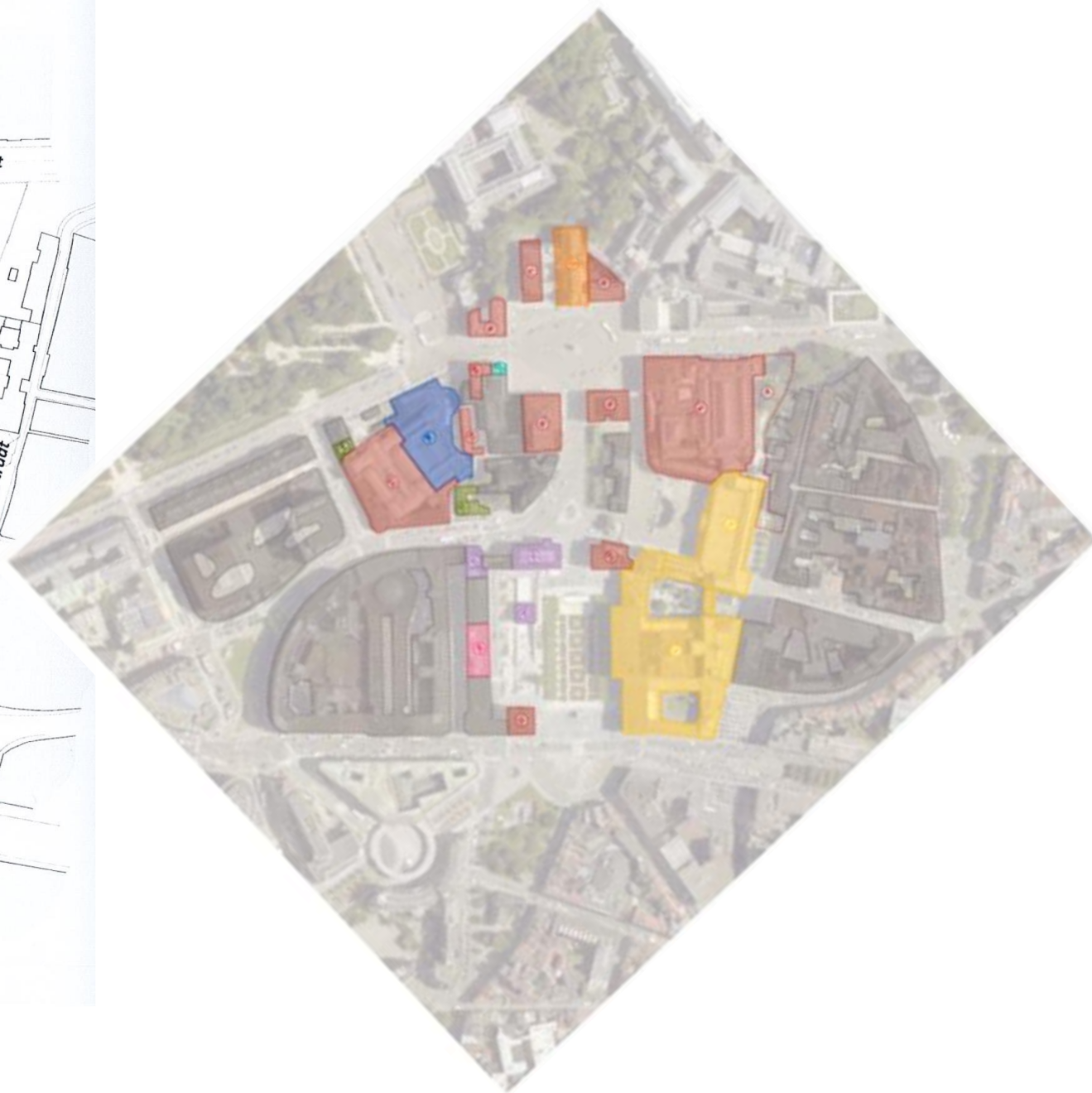
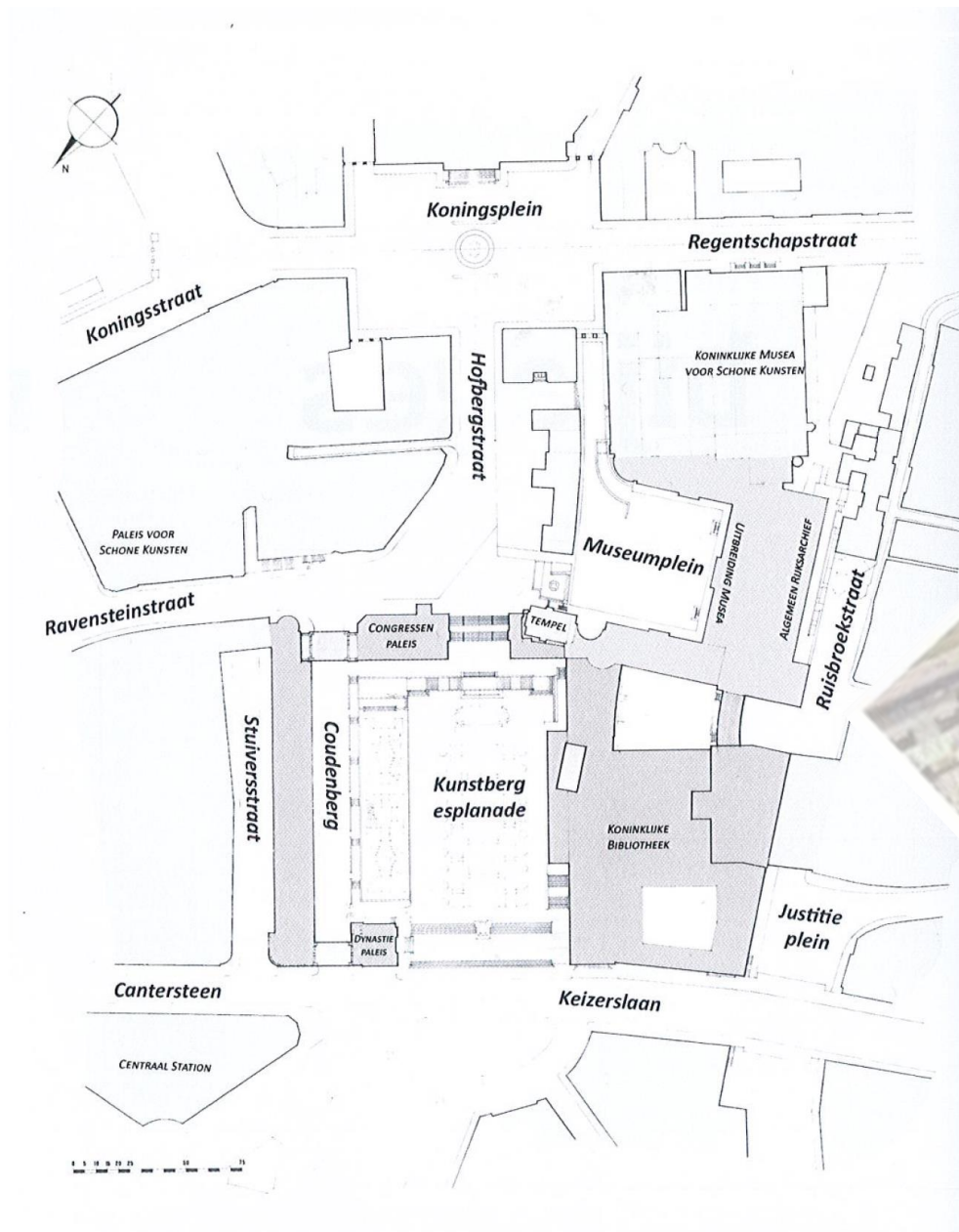
aphael, School of Athens, Philosophy (or science), in Stanza della segnatura, former library of the pope Julius II, 1509/1511







































































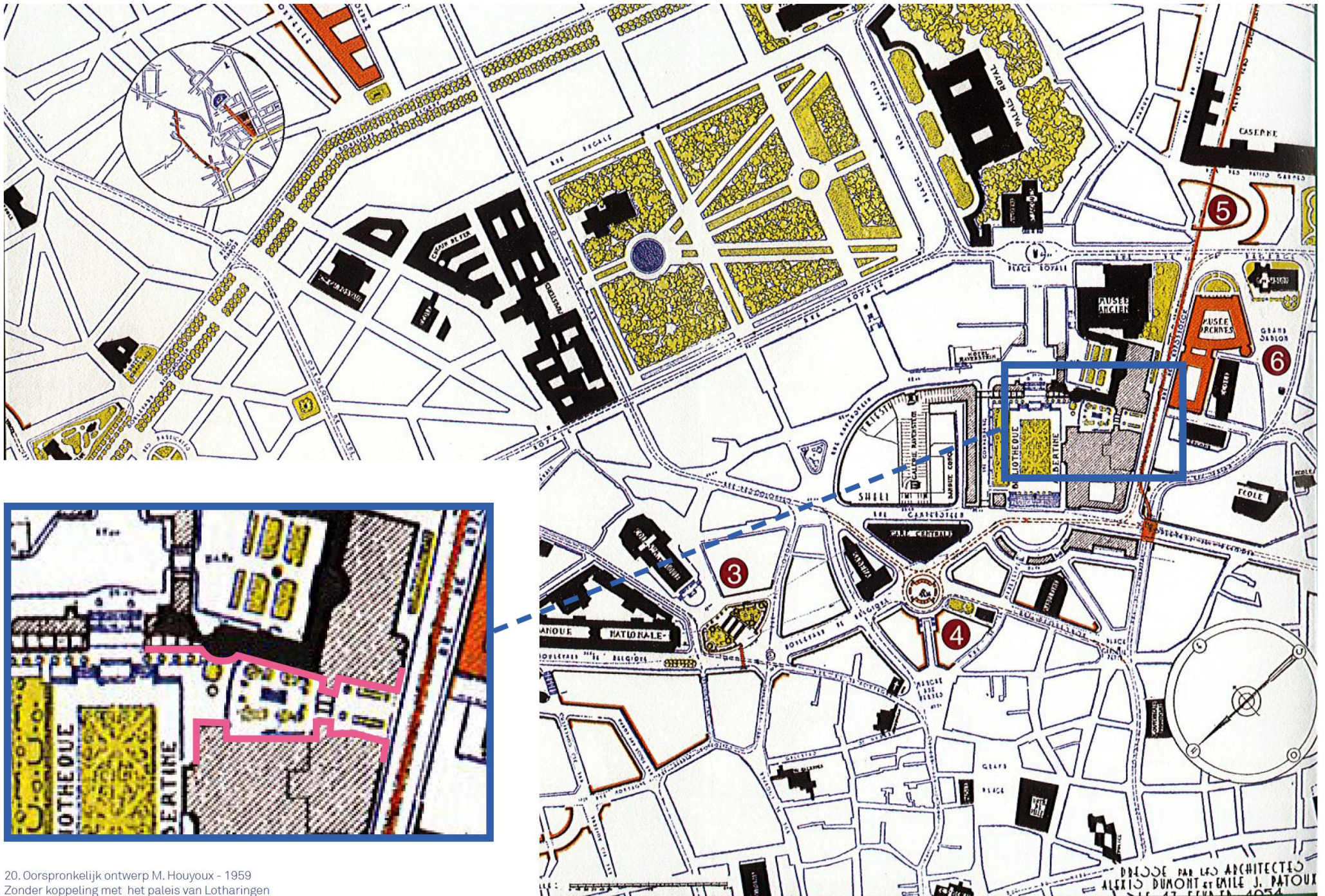






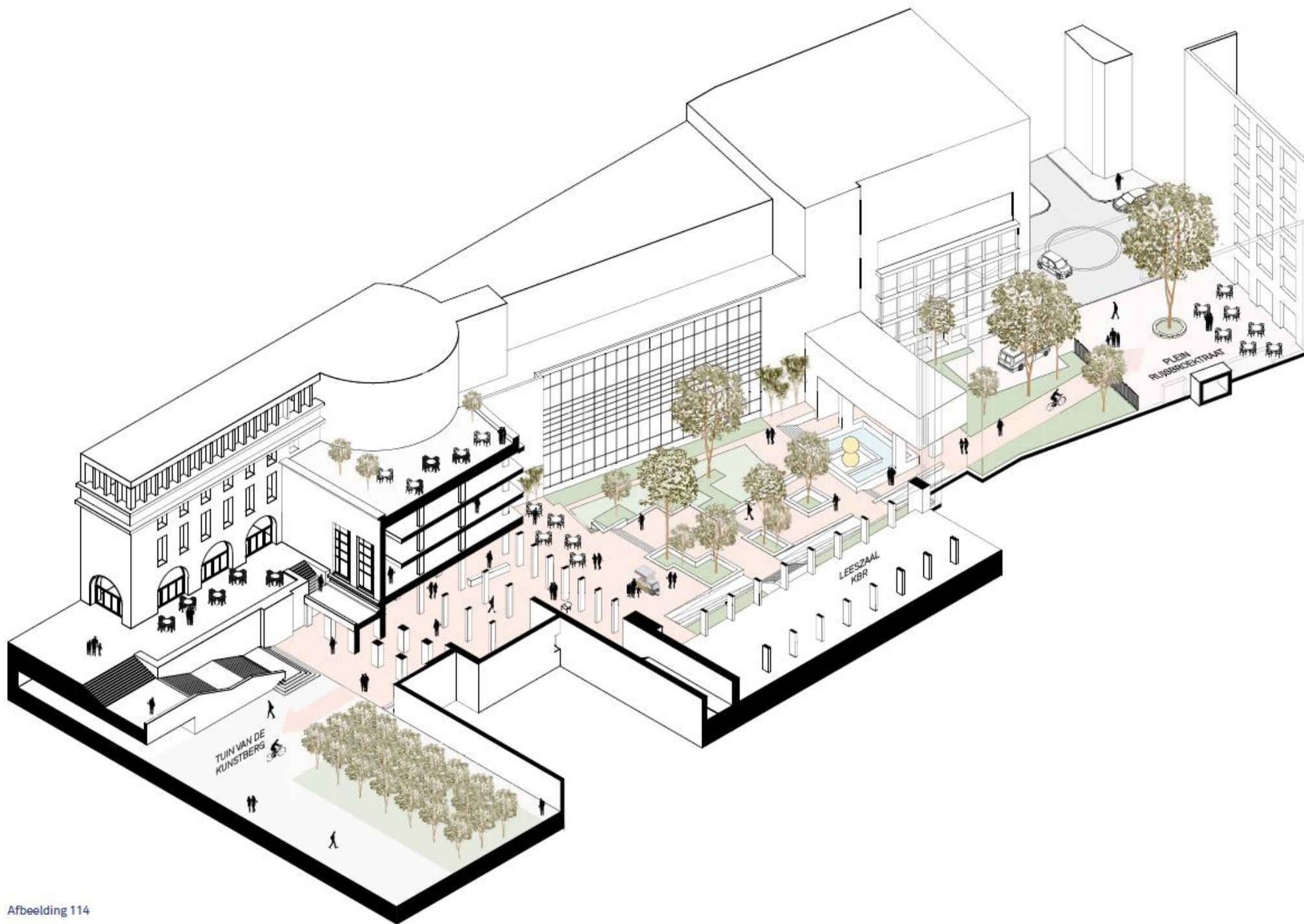






20. Oorspronkelijk ontwerp M. Houyoux - 1959  
Zonder koppeling met het paleis van Lotharingen

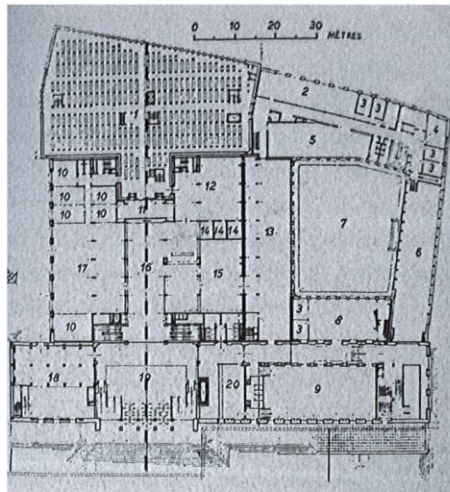




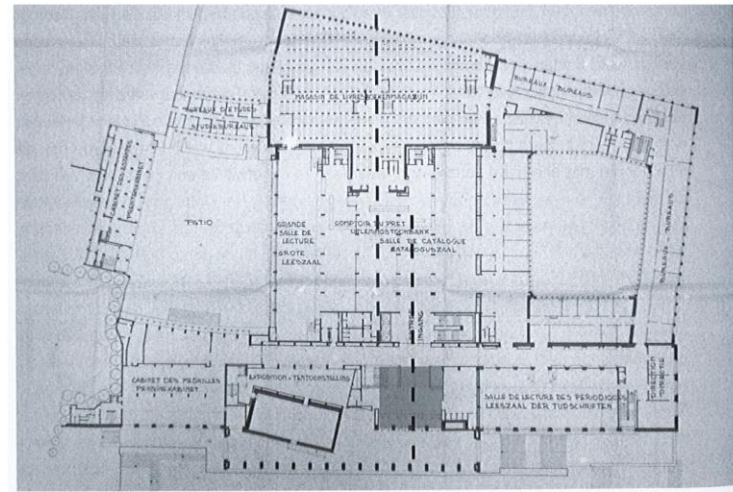






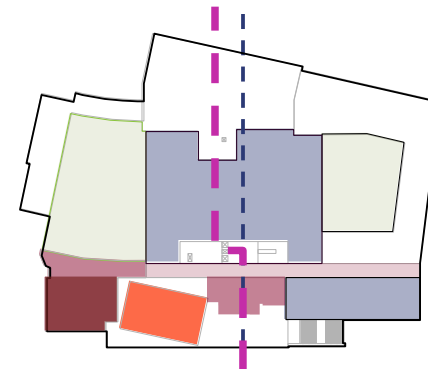
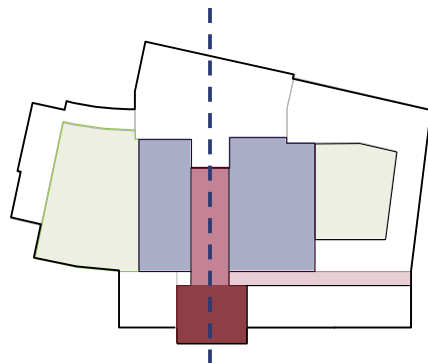


Ontwerp M. Houyoux 1959



Ontwerp R. Deelers 1963

JCAU LEESZAAL KBR



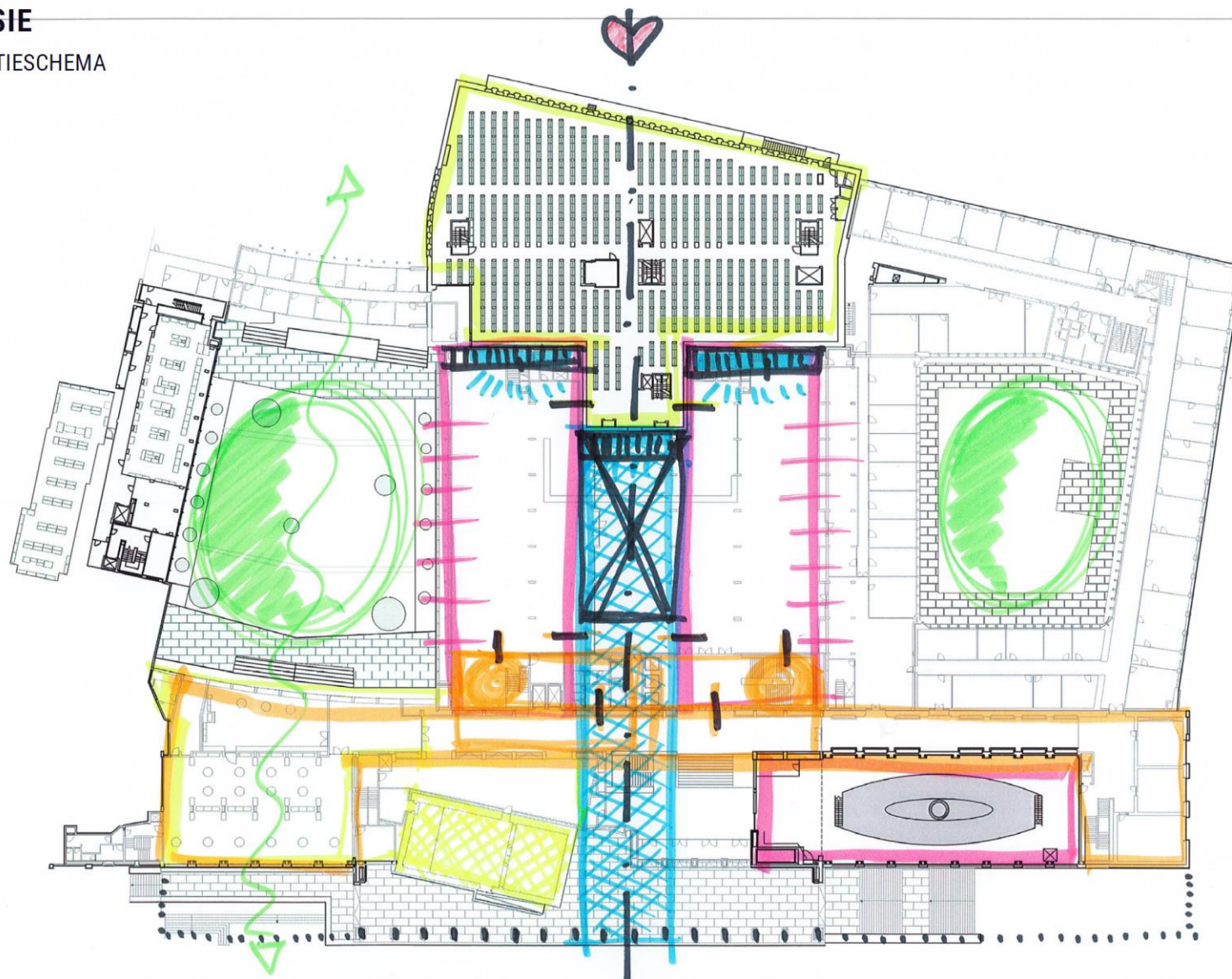






### 03 VISIE

#### INSPIRATIESCHEMA





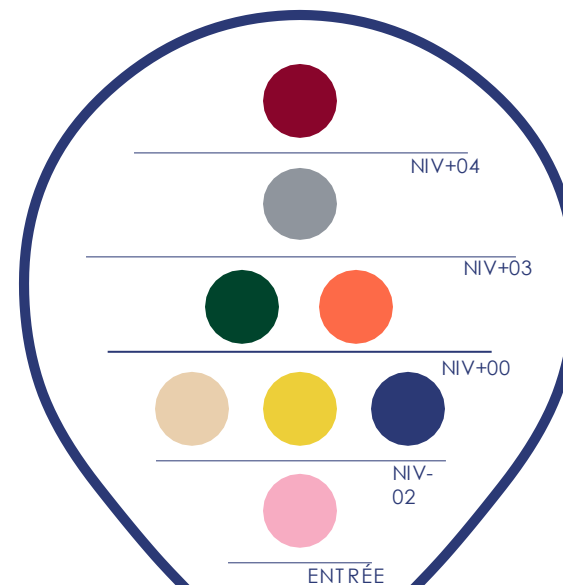
## 8 heritage collections



- Manuscripts
- Contemporary prints
- Newspapers
- Maps and plans
- Old and precious prints
- Coins and tokens
- Music
- Prints



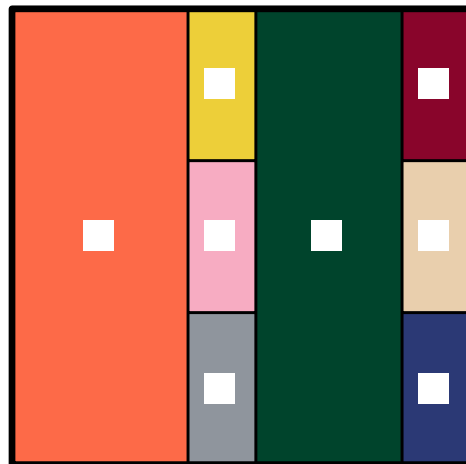
KBR 2.0



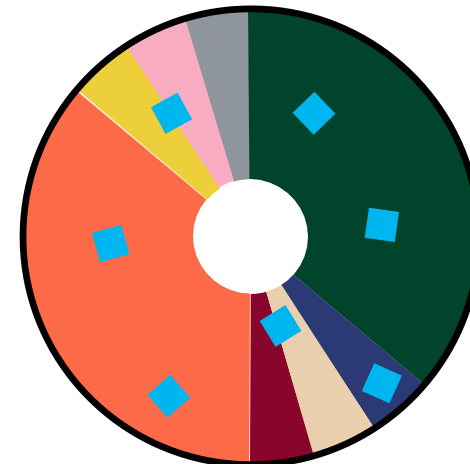
KBR 2.1





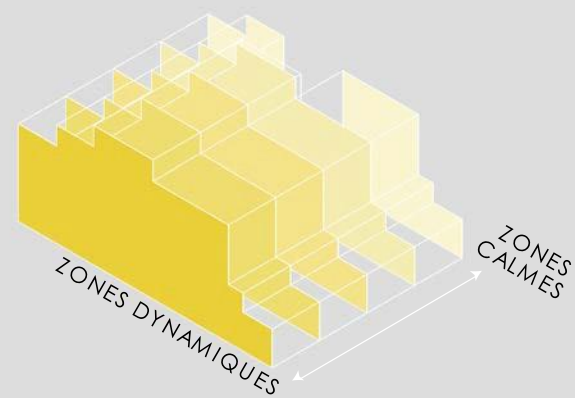
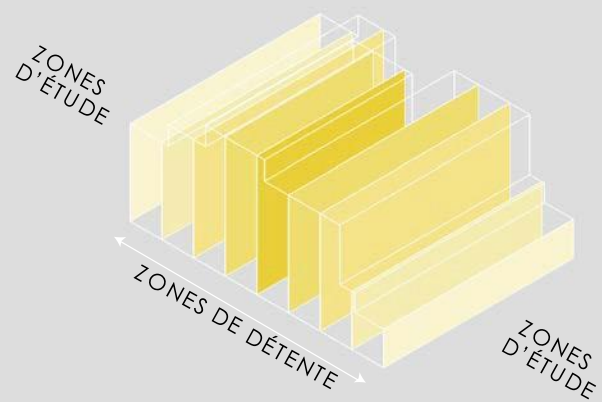
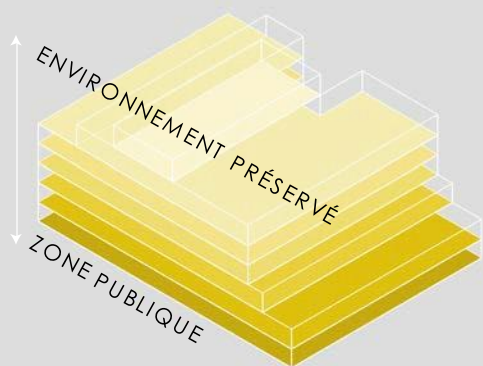


AGGREGATION KBR 2.0



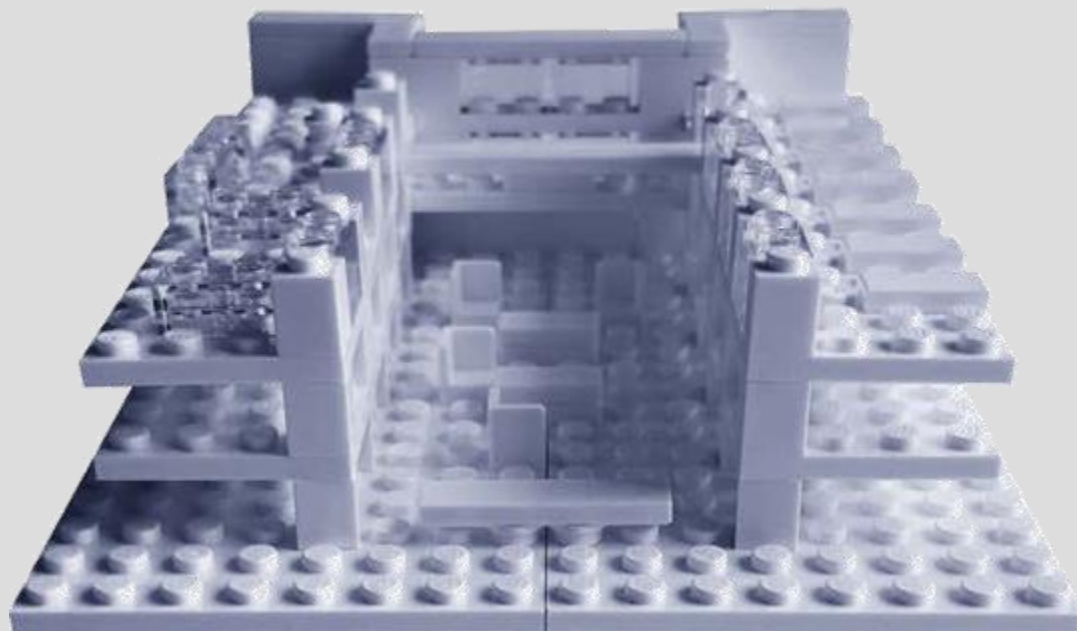
FUSION KBR 2.1



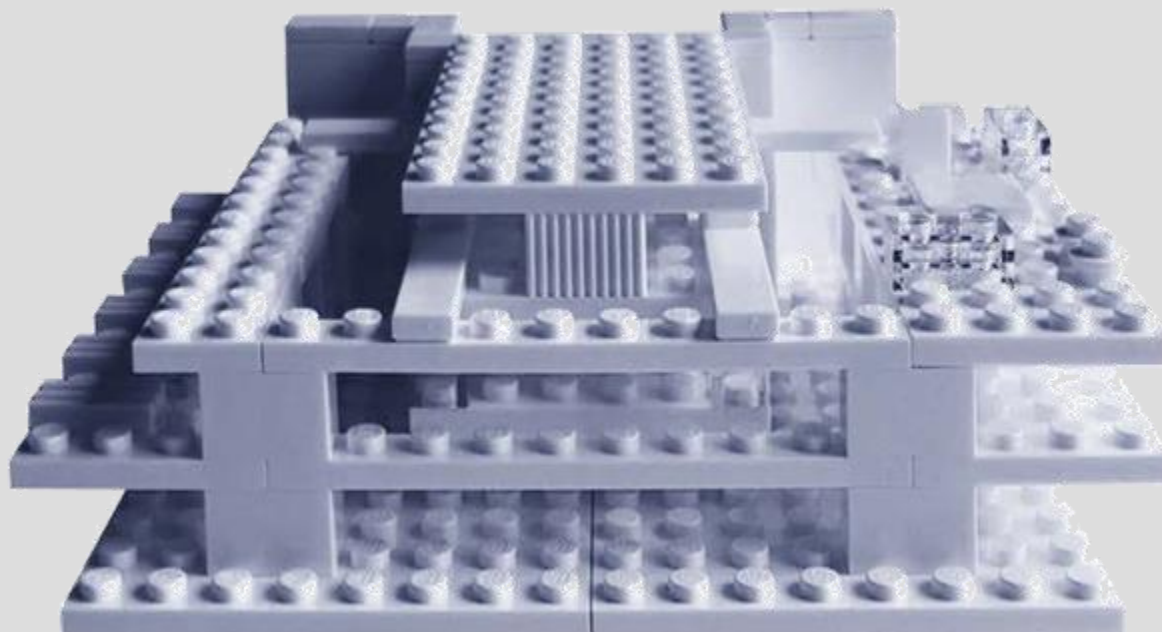




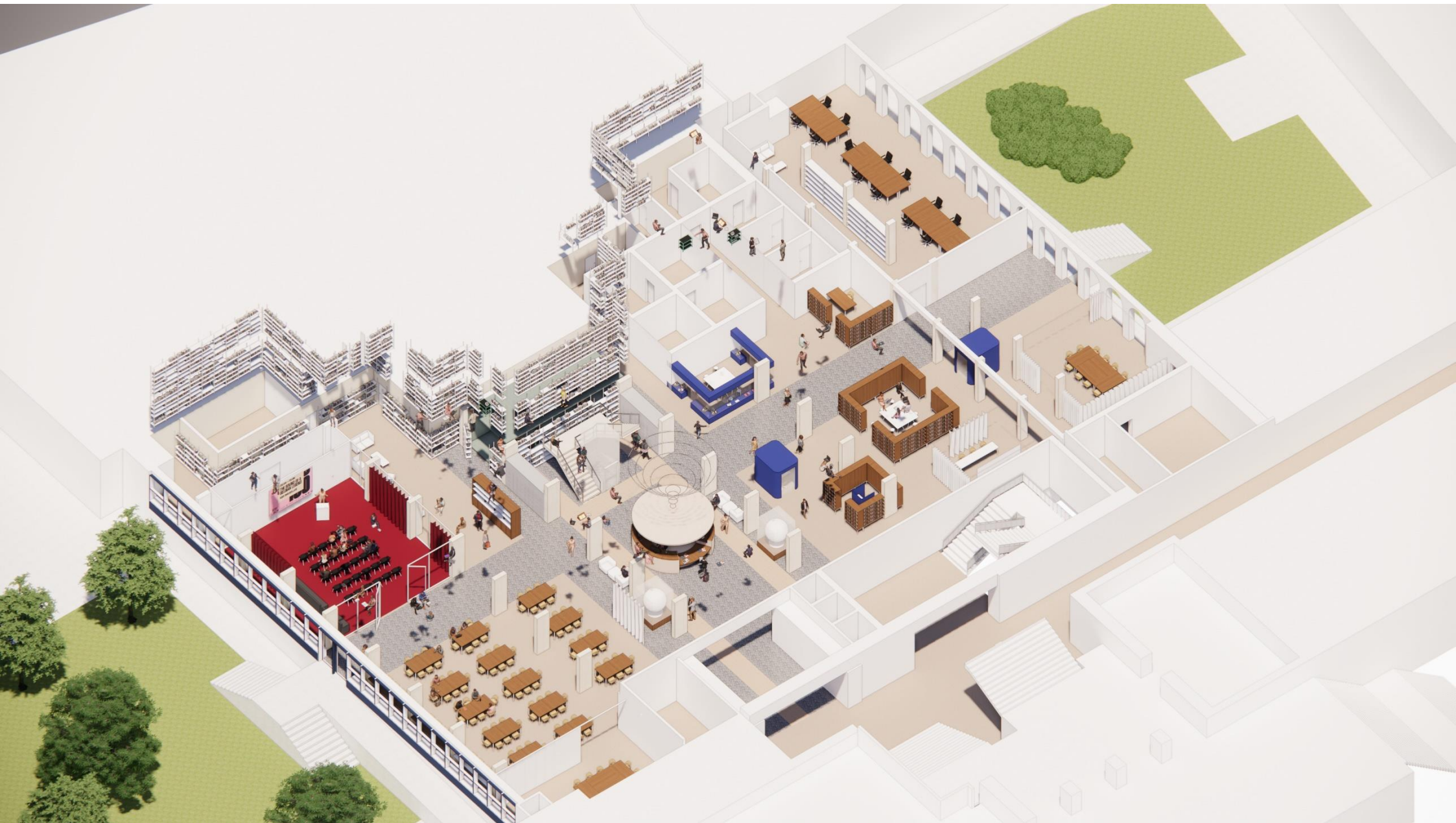
CAVAEDIUM



STUDIOLO M







“GROUND” LEVEL: URBAN LIVING ROOM





“GROUND” LEVEL: URBAN LIVING ROOM





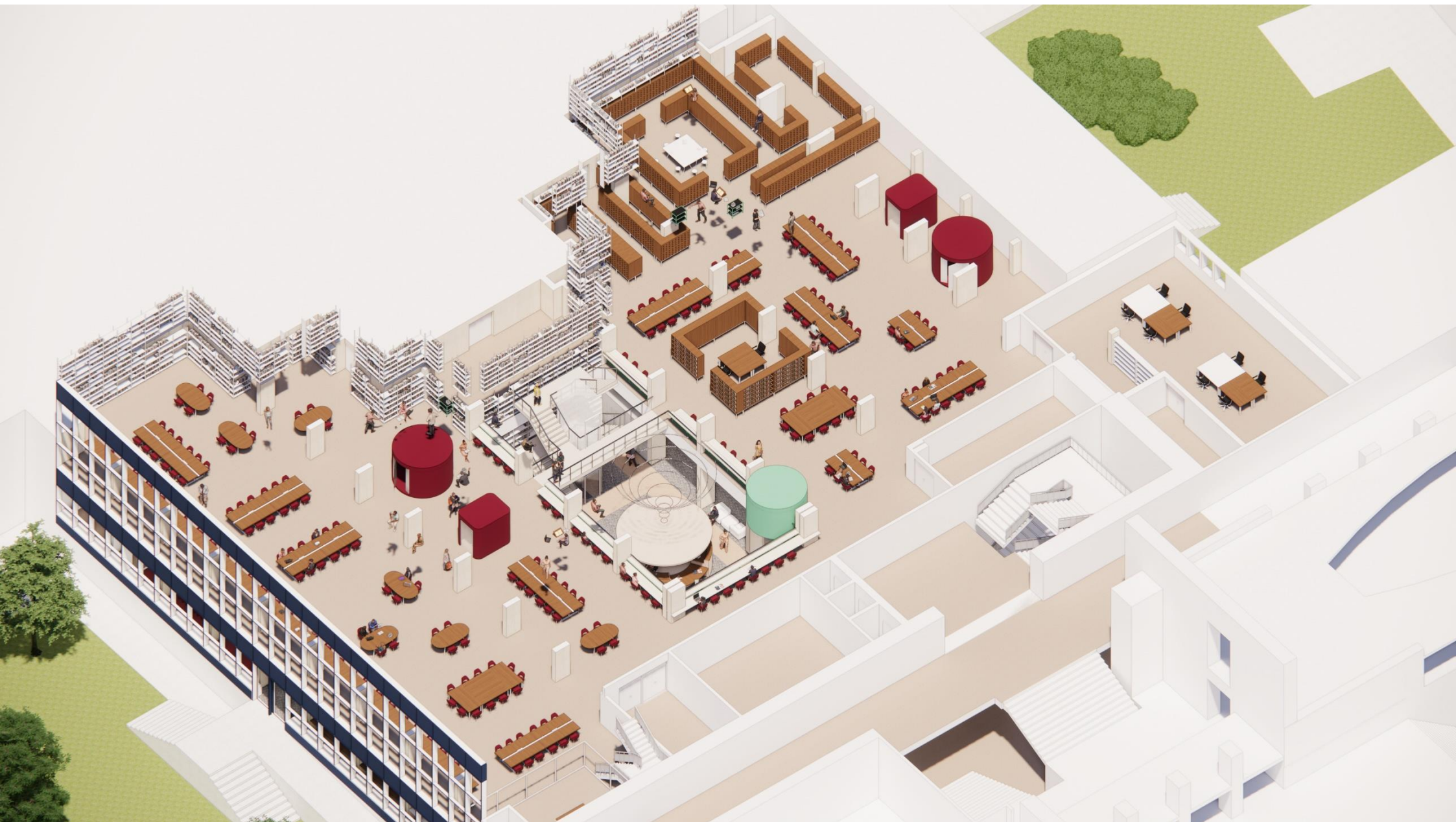
“GROUND” LEVEL: URBAN LIVING ROOM





“GROUND” LEVEL: URBAN LIVING ROOM





LEVEL 2 : Learning center





LEVEL 2 : Learning center





LEVEL 2 : Learning center





LEVEL 3: KBR Collections





## LEVEL 3: KBR Collections





LEVEL 3: KBR Collections





LEVEL 3: KBR Collections



### LEVEL 3: KBR Collections







LEVEL 3: KBR Collections





SPECIALS





## RESTORATION AND REUSE OF DE COENE FURNITURE



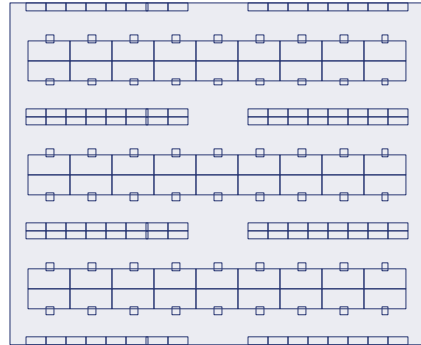
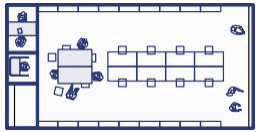


# TYPES OF STUDIOLI

## STUDIOLO READING ROOM

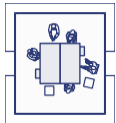
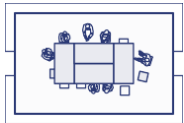
### STUDIOLO STUDY ROOM

studiolo kwetsbare documenten



### STUDIOLO WORK AND CONNECT

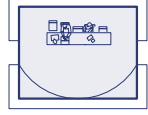
sale de réunion  
15 places



1 on 1



sale de  
méditation



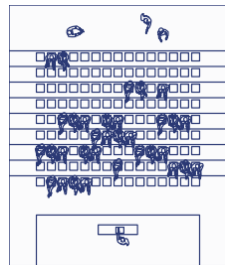
pitch-arena



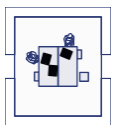
brainstormwall



table de lecture



studiolo des monnaies



studiolo de musique

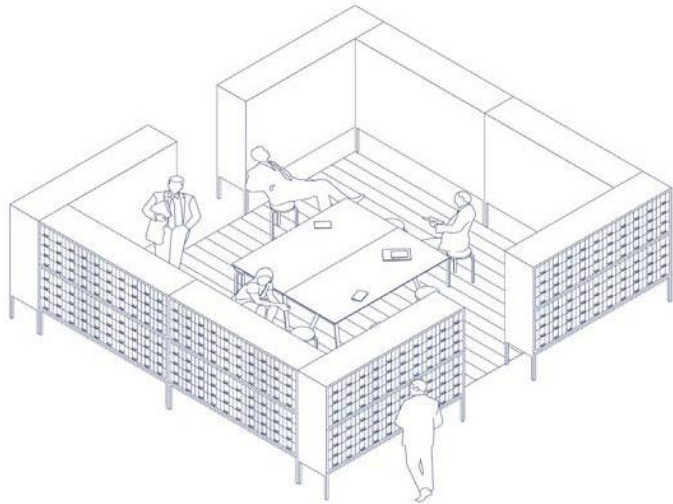


Antonello da messina, San Girolamo nello studio, 1475

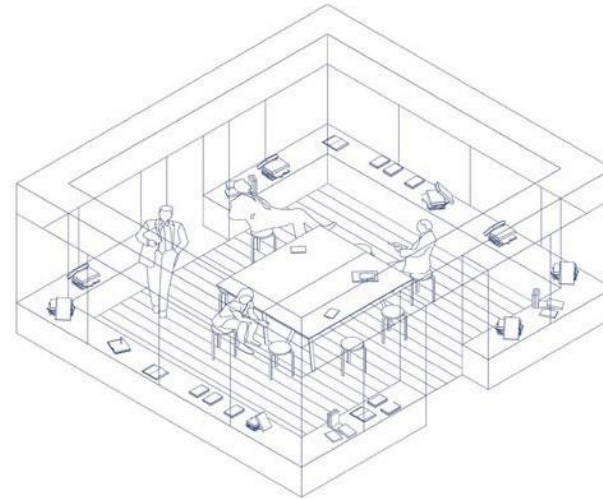


# REUSE OF SHELVES AS PARTITION WALLS

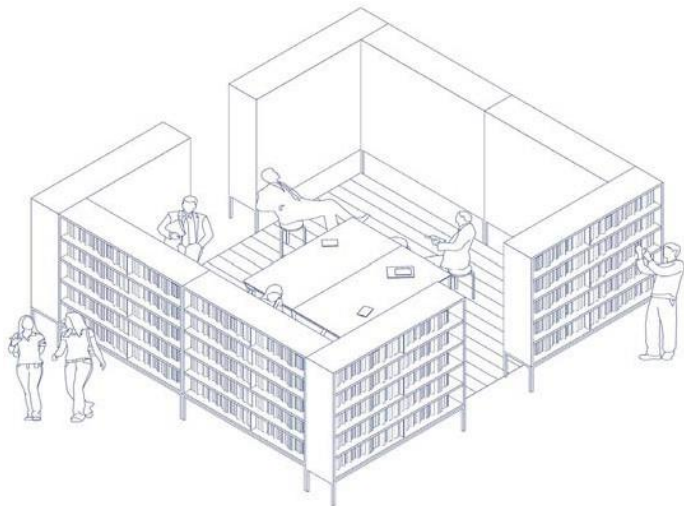
studiolo + catalogues



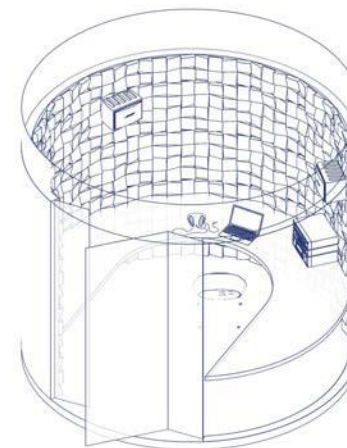
studiolo as a showcase



studiolo+ bookshelves



studiolo for music collection











**KBR**

Bibliothèque royale de Belgique  
Boulevard de l'Empereur 4  
B - 1000 Bruxelles  
Tel. +32 2 519 53 11  
[www.kbr.be](http://www.kbr.be)

**JCAU**

JCAU Jo Coenen Architects & Urbanists  
Boschcour 20  
NL - 6221 JR Maastricht  
Tel. +31 43 3511800  
[www.jcau.nl](http://www.jcau.nl)

**SB<sup>nl</sup>Heedfeld**  
studiebureau in technische uitrusting van gebouwen

Studiebureau Heedfeld  
Reggerstraat 71  
BE - 3770 Riemst  
Tel. +32 1 245 19 50  
[www.sbheedfeld.be](http://www.sbheedfeld.be)